

-Designed for professional high speed printing application grade materials-

QIDI Tech X-PLUS 3

- Faster Speed 600mm/s
- Bigger than bigger 280*280*270 mm
- High-Flow 35mm³/s
- Acceleration: 20000mm/s²



KLIPPER



COREXY structure



QIDI High-speed
extruder



QIDI High performance
material

PLUS 3 configures the above technologies for truly fast printing!

KLIPPER

**64-bit
Processor**

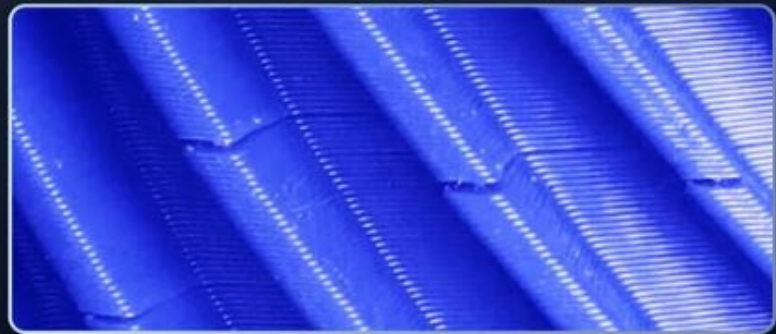
Cortex-A53

Main frequency 1.5GHZ, equipped with 8G-EMMC and 1G DDR3

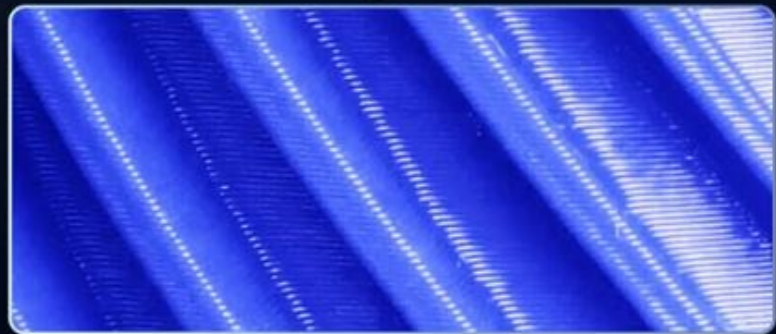
Temperature Controlled Chamber

- Independent Heating Device
- Maximum Temp 65°C
- High Efficiency Printing PET-CF ,PAHT-CF etc
- Chamber Circulation Fan

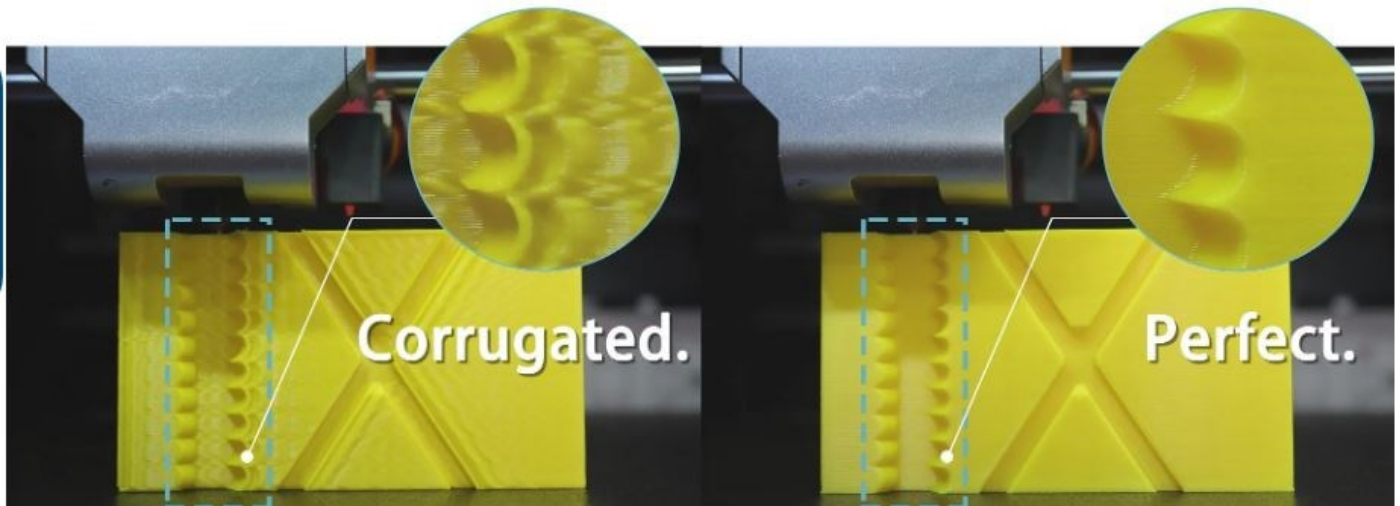
No chamber heating



Chamber heating

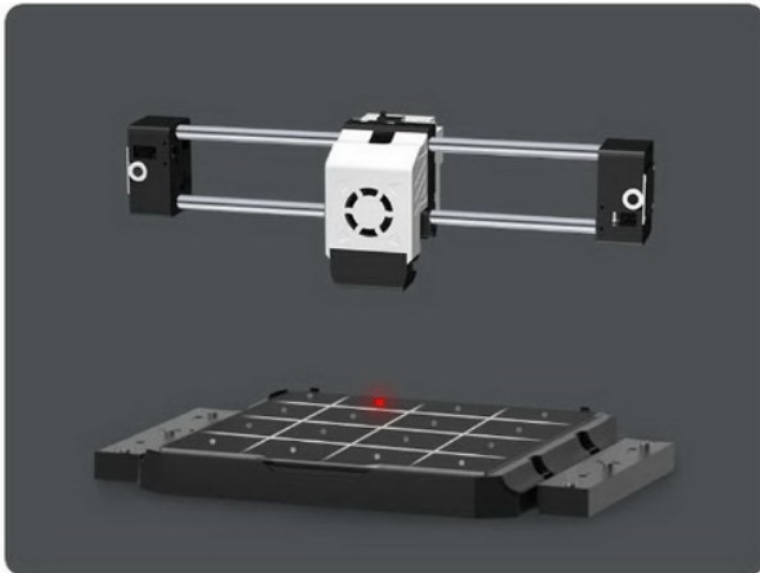


Resonance Compensation



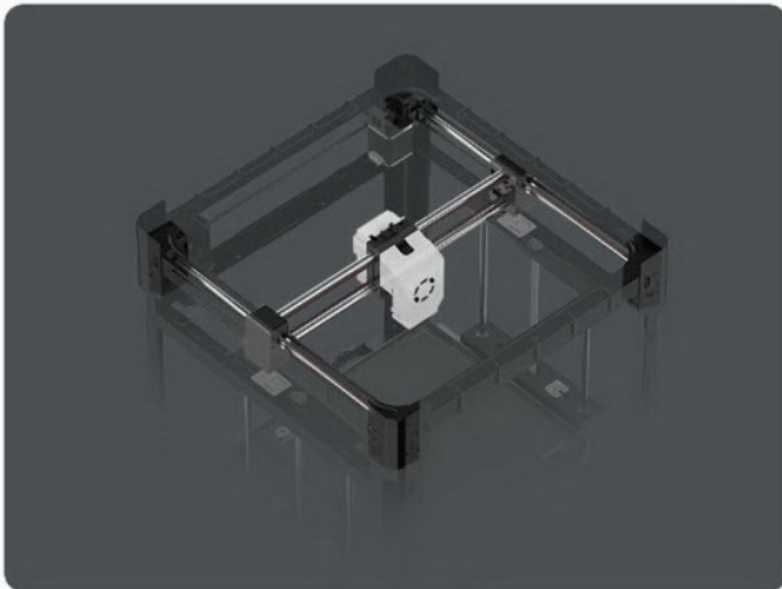
Turn off

Turn on



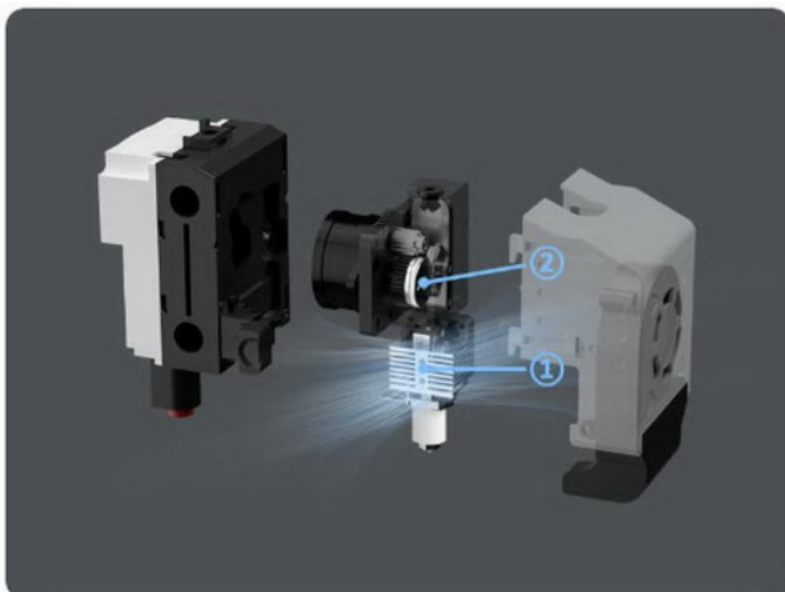
Automatic Leveling

Klipper Adaptive Meshing and Purging, fast ensure flawless first layer for every 3D print.



CoreXY Structure

Reduce the motion Inertia and improve the motion speed. TMC2209 silent drive less noise.



New cooling system

Reducing the risk of clogs and ensuring smooth extrusion.

9.5:1 gear ratio

Steadier, power, faster extrusion.

QIDI TECH X-PLUS 3

Technology	FDM
Build volume	280 x 280 x 270mm
Net Weight (Kg)	24.3Kg
Print Speed	≤600mm/s
Extruder Flow	35mm ³ /s
Hotend Temp	≤ 350 ⁰ C
Hotend (Included)	Copper Alloy nozzle for common materials Harden Steel nozzle for Abrasive Materials
Heated Bed Temp	≤120 ⁰ C
Chamber Temperature Control	65 ⁰ C Independent Chamber Heating with Chamber Circulation Fan & Activated Carbon Filter
Interface	5.0 Inch Touch screen
Connection Options	Wi-fi/ USB Flash Drive/ Ethernet Cable
Compatible Filament / Diameter	PLA, ABS, ASA, PETG, TPU, PC, Nylon, etc 1.75mm diameter filament
Firmware	Klipper
Bed Leveling	Automatic Bed Leveling
Nozzle diameter	0.40mm (default) 0.2, 0.6, 0.8mm (optional)
Slicing Software	Qidi Slicer, Prusa Slicer, Simplify3D, etc
Operating System	Windows / MacOS/ Linux
Voltage / Rated Power	100-240VAC/ 800W